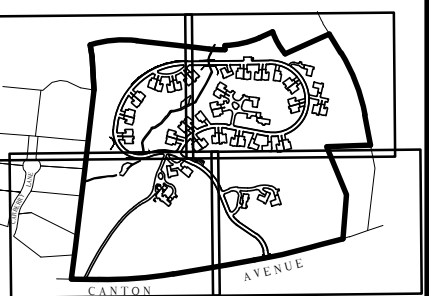


REVISIONS



KEY PLAN

DRAWN BY: JG

DESIGNED BY: JG/DWK

CHECKED BY: DWK

Merrill
Engineers and Land Surveyors
427 COLUMBIA ROAD, HANOVER, MA 02339 / T: (781) 826-9200
26 UNION STREET, PLYMOUTH MA 02360 / T: (508) 746-6060
WWW.MERRILLINC.COM

SITE PLAN
WOLCOTT WOODS
MILTON, MASSACHUSETTS
PREPARED FOR: WOLCOTT RESIDENTIAL, LLC
80 BEHARRELL STREET, SUITE E,
CONCORD, MASSACHUSETTS 01742

AUGUST 31, 2018

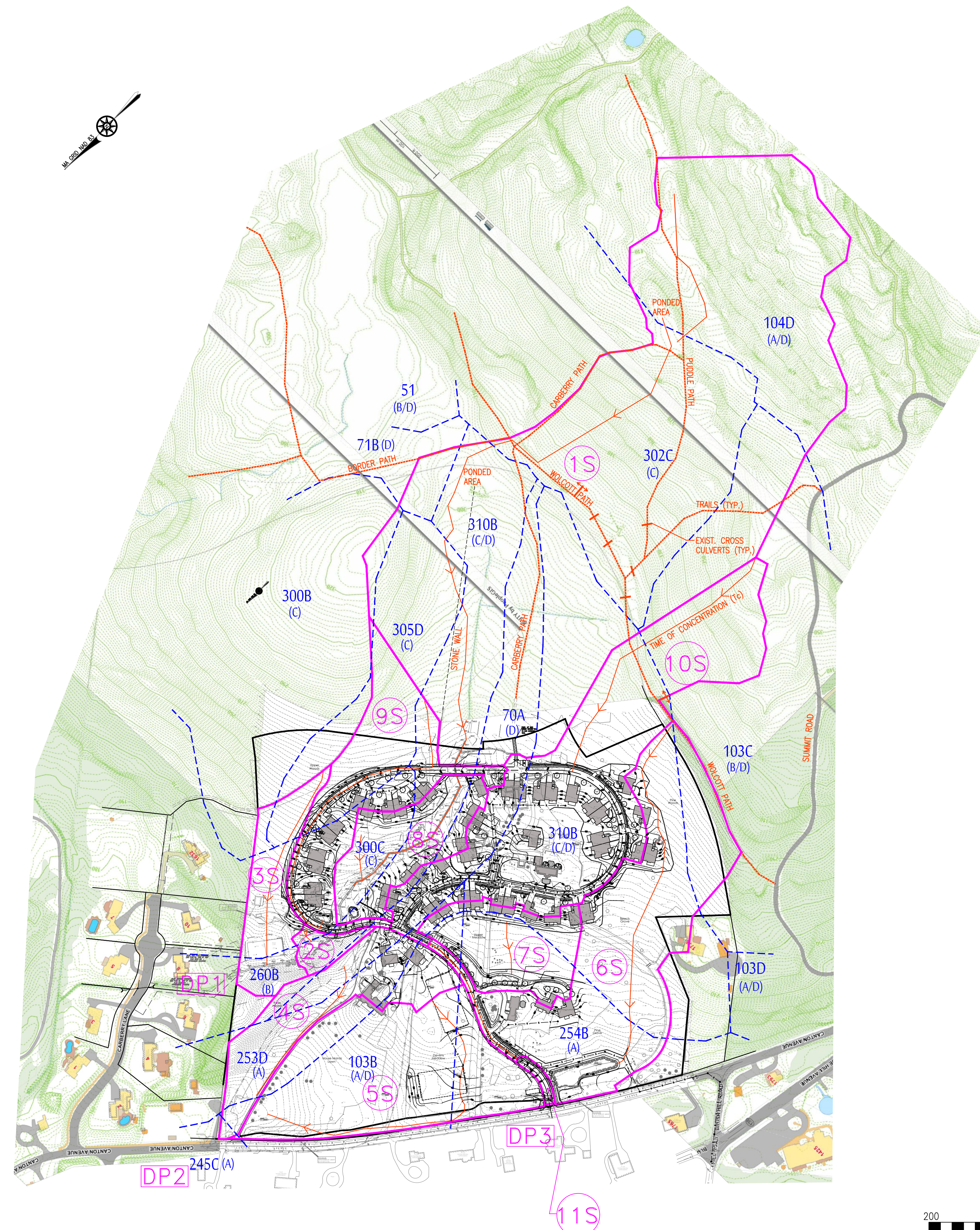
SCALE: 1" = 200'

JOB No. 16-079

LATEST REVISION:

PROPOSED WATERSHED PLAN

PROPOSED CONDITIONS WATERSHED



SUBCATCHMENT 1S

DESCRIPTION	AREA (S.F.)	S.F.
WOODS (HSG A)	153,412	S.F.
WOODS (HSG C)	929,681	S.F.
GRASS (HSG C)	185,864	S.F.
WOODS (HSG D)	459,084	S.F.
GRASS (HSG D)	84,545	S.F.
WETLAND STREAM CHANNEL	946	S.F.
TOTAL AREA FOR 1S	1,813,532	S.F.

SUBCATCHMENT 7S

DESCRIPTION	AREA (S.F.)	S.F.
IMPERVIOUS (HSG A)	9,963	S.F.
WOODS (HSG A)	40,675	S.F.
IMPERVIOUS (HSG C)	10,854	S.F.
WOODS (HSG C)	11,139	S.F.
GRASS (HSG A)	45,027	S.F.
GRASS (HSG C)	19,832	S.F.
TOTAL AREA FOR 7S	137,490	S.F.

SUBCATCHMENT 2S

DESCRIPTION	AREA (S.F.)	S.F.
WETLAND STREAM CHANNEL	3,336	S.F.
WOODS (HSG B)	17,332	S.F.
GRASS (HSG C)	624	S.F.
WOODS (HSG C)	3,464	S.F.
TOTAL AREA FOR 2S	24,756	S.F.

SUBCATCHMENT 8S

DESCRIPTION	AREA (S.F.)	S.F.
IMPERVIOUS (HSG C)	10,854	S.F.
WOODS (HSG C)	56,850	S.F.
GRASS (HSG C)	39,960	S.F.
IMPERVIOUS (HSG D)	6,997	S.F.
GRASS (HSG D)	13,257	S.F.
GRASS (HSG B)	4,792	S.F.
WETLAND STREAM CHANNEL	5,996	S.F.
TOTAL AREA FOR 8S	138,706	S.F.

SUBCATCHMENT 3S

DESCRIPTION	AREA (S.F.)	S.F.
WOODS (HSG B)	27,020	S.F.
GRASS (HSG C)	30,772	S.F.
WOODS (HSG C)	58,057	S.F.
WETLAND STREAM CHANNEL	2,427	S.F.
TOTAL AREA FOR 3S	118,276	S.F.

SUBCATCHMENT 9S

DESCRIPTION	AREA (S.F.)	S.F.
IMPERVIOUS (HSG C)	75,189	S.F.
WOODS (HSG C)	92,096	S.F.
GRASS (HSG C)	65,408	S.F.
TOTAL AREA FOR 9S	232,693	S.F.

SUBCATCHMENT 4S

DESCRIPTION	AREA (S.F.)	S.F.
IMPERVIOUS (HSG A)	27,302	S.F.
WOODS (HSG A)	44,334	S.F.
GRASS (HSG A)	54,496	S.F.
WOODS (HSG B)	9,397	S.F.
WOODS (HSG D)	22,408	S.F.
GRASS (HSG D)	9,406	S.F.
IMPERVIOUS (HSG D)	8,628	S.F.
TOTAL AREA FOR 4S	175,971	S.F.

SUBCATCHMENT 10S

DESCRIPTION	AREA (S.F.)	S.F.
IMPERVIOUS (HSG A)	1,375	S.F.
GRASS (HSG A)	1,811	S.F.
WOODS (HSG B)	126,272	S.F.
IMPERVIOUS (HSG D)	44,988	S.F.
GRASS (HSG D)	34,183	S.F.
IMPERVIOUS (HSG C)	87,376	S.F.
WOODS (HSG C)	121,146	S.F.
GRASS (HSG C)	129,363	S.F.
GRAVEL (HSG C)	2,400	S.F.
TOTAL AREA FOR 10S	548,914	S.F.

SUBCATCHMENT 5S

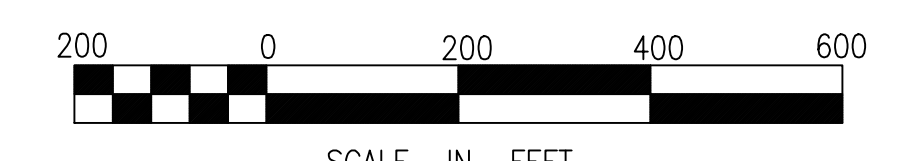
DESCRIPTION	AREA (S.F.)	S.F.
IMPERVIOUS (HSG A)	6,592	S.F.
WOODS (HSG A)	114,707	S.F.
GRASS (HSG A)	230,226	S.F.
TOTAL AREA FOR 5S	351,525	S.F.

SUBCATCHMENT 11S

DESCRIPTION	AREA (S.F.)	S.F.
IMPERVIOUS (HSG A)	5,800	S.F.
GRASS (HSG A)	1,360	S.F.
TOTAL AREA FOR 11S	7,160	S.F.

SUBCATCHMENT 6S

DESCRIPTION	AREA (S.F.)	S.F.
WOODS (HSG A)	82,018	S.F.
GRASS (HSG A)	54,246	S.F.
WOODS (HSG C)	155,461	S.F.
GRASS (HSG C)	52,059	S.F.
IMPERVIOUS (HSG C)	23,141	S.F.
IMPERVIOUS (HSG A)	31,002	S.F.
WOODS (HSG B)	71,285	S.F.
TOTAL AREA FOR 6S	469,212	S.F.



COPYRIGHT © BY MERRILL CORPORATION
NO PART OF THIS DOCUMENT MAY BE REPRODUCED, STORED IN A RETRIEVAL SYSTEM, OR TRANSMITTED IN ANY FORM OR BY ANY MEANS, ELECTRONIC, MECHANICAL, PHOTOCOPIING, RECORDING OR OTHERWISE, WITHOUT THE EXPRESS WRITTEN CONSENT OF MERRILL CORPORATION WITH THE EXCEPTION OF ANY REGULATORY AUTHORITY WHICH MAY REPRODUCE IT IN CONJUNCTION WITH THE PERFORMANCE OF OFFICIAL BUSINESS UNDER ITS JURISDICTION. ANY MODIFICATIONS MADE TO THIS DOCUMENT WITHOUT THE EXPRESS WRITTEN CONSENT OF MERRILL CORPORATION SHALL RENDER IT UNUSABLE.