



WOODMERE
AT BRUSH HILL



The Adams

3 Bedroom / 2.5 Bath / Den / Loft
2,715 SF End Unit

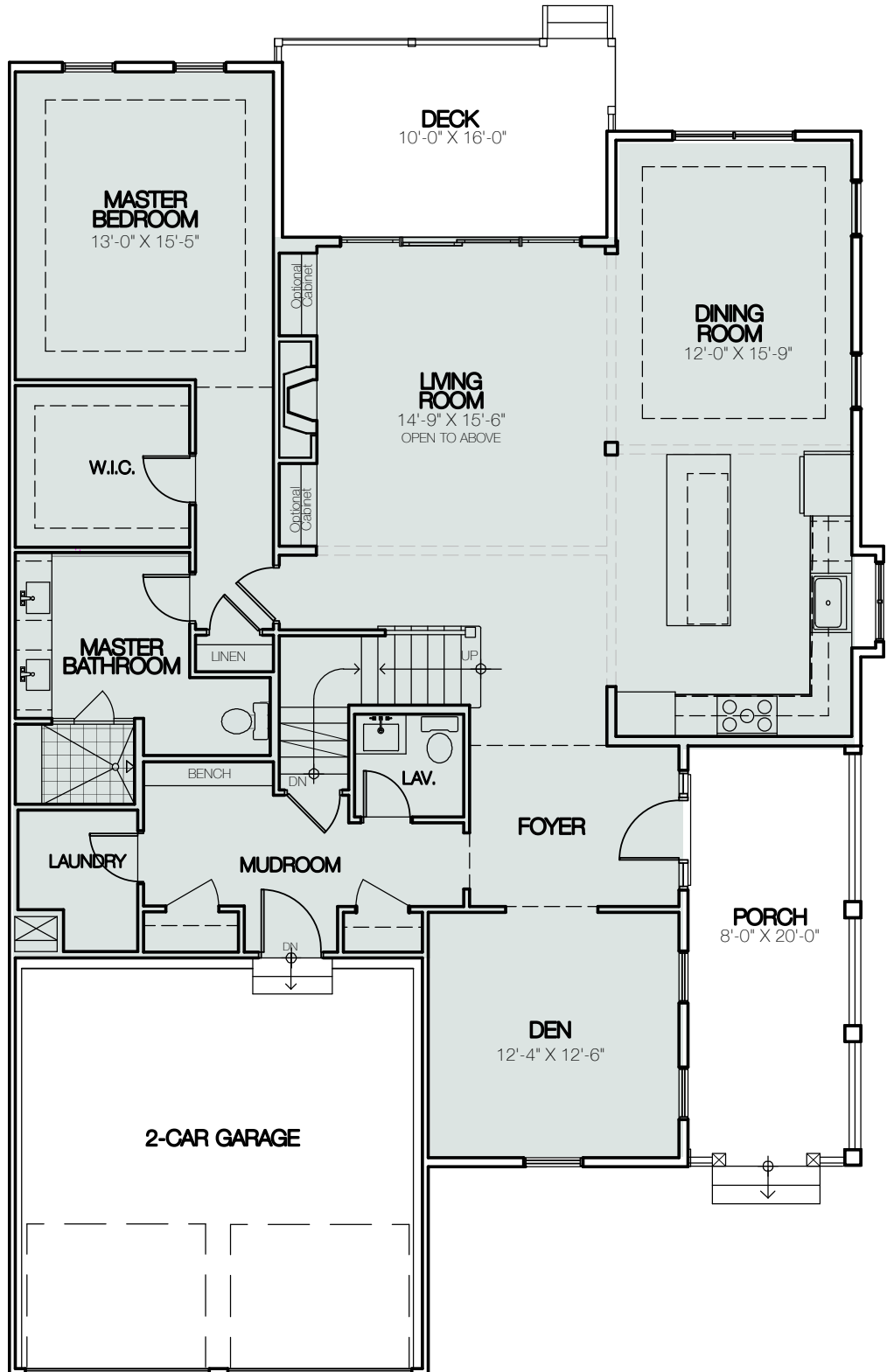
The above image represents an architect's illustrative rendering of the floor plan. The dimensions and configurations are schematic, are provided for informational purposes only, and should be considered approximate. The builder and architect reserve the right to make modifications.
June 2016





WOODMERE
AT BRUSH HILL

First Floor
1,700 SF



The above image represents an architect's illustrative rendering of the floor plan. The dimensions and configurations are schematic, are provided for informational purposes only, and should be considered approximate. The builder and architect reserve the right to make modifications. July 2016



WOODMERE
AT BRUSH HILL

Second Floor 1,015 SF

